

# Unit 162

## Retire in Style and Comfort



### Pascoe Vale Gardens Retirement Village

- Effortless Independent Living

146 Boundary Road  
Pascoe Vale, VIC 3044



INSPECTIONS OF THE PROPERTY ARE BY APPOINTMENT ONLY.  
PLEASE CONTACT LYNDIA ON 0409 964 622 OR 03 9831 9876 TO ARRANGE YOUR PERSONAL TOUR.





Unit 162

\$625,000

Fuss-Free  
Lifestyle

## FLOOR PLAN

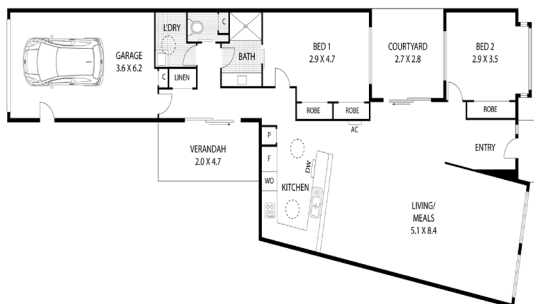
This beautiful 2-bedroom unit delivers an exceptional low-maintenance lifestyle.

The generously sized master bedroom with built-in robes conveniently leads into the dual entry main bathroom which also acts as an ensuite. Unit 162 boasts a full-sized kitchen with lowered oven and microwave space and is adjacent to the huge living and dining areas, making it perfect for entertaining.

The dining leads out to a private central courtyard where you can sit for your morning cuppa. A 2nd undercover rear courtyard offers extra space for outdoor dining and is off the hallway beside the separate laundry and the internal access to a single lock-up garage. Additional features include, ample storage, 6 solar panels, sliding shower door, new split cooling system and fans in the living area and main bedroom.

Enjoy a lovely walk around the picturesque gardens to our fabulous Clubhouse with all its facilities such as a Cinema, Gym, Library and Bar, the main Reception, Restaurant and Café.

To arrange your private inspection please call Lynda on 0409 964 622.  
Sales: 03 9831 9876



### Property Features:

- New Spit Cooling System
- Fans in Living and Main BR
- 24/7 Emergency call system
- Solar Panels
- Single Lock up garage

### Community Facilities:

- Library & Cinema
- Café & Bar
- Restaurant
- Hair and Beauty Salon
- Community Bus
- Visiting Doctors and Allied Health professionals
- Bowling Green

Pascoe Vale  
Gardens  
Retirement  
Living



A premium independent living option and a relaxing, stress - free place to call home.

Location:  
146 Boundary Road  
Pascoe Vale, Vic 3044

**amicum**  
RETIREMENT LIVING SPECIALISTS