

# Unit 167

Large Lounge/ Dining  
Full Sized Kitchen



## Pascoe Vale Gardens Retirement Village

- Effortless Independent Living

146 Boundary Road  
Pascoe Vale, VIC 3044



INSPECTIONS OF THE PROPERTY ARE BY APPOINTMENT ONLY.  
PLEASE CONTACT LYNDA ON 0409 964 622 OR 03 9831 9876 TO ARRANGE YOUR PERSONAL TOUR.





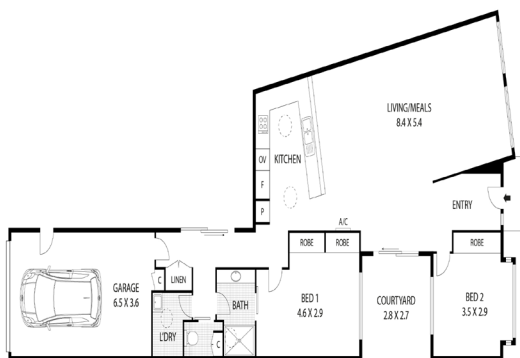
Unit 167

\$625,000

Style  
Comfort

amicum

## FLOOR PLAN



This beautiful unit features open plan living and dining, two bedrooms, 2 courtyards and is perfectly positioned within the Village.

This home boasts a full-sized kitchen with quality appliances, adjacent to the huge living and dining area with the ambience of the central courtyard.

The generously sized master bedroom with built-in robes leads into the dual entry main bathroom which also doubles up as an ensuite. The neutral tones will match any decor. Additional features include ample storage, 6 solar panels, new carpets throughout, specially made ramps at back doors, lock-up garage with remote control and internal access.

It's time to relax and embrace life in this wonderful low-maintenance home in a safe and secure community. You also have 24/7 emergency call system for peace of mind.

To arrange your private inspection please call Lynda on 0409 964 622.

Sales: 03 9831 9876

### Property Features:

- Ducted heating
- Split air conditioning
- 24/7 Emergency call system
- Solar panels
- 2 courtyards
- Large Single garage with remote

### Community Facilities:

- Library & Cinema
- Café & Bar
- Restaurant
- Hair and Beauty Salon
- Community Bus
- Visiting Doctors & Allied Health professionals
- Bowling Green

Pascoe Vale  
Gardens  
Retirement  
Living



A premium independent living option and a relaxing, stress - free place to call home.

Location:  
146 Boundary Road  
Pascoe Vale, Vic 3044

amicum  
RETIREMENT LIVING SPECIALISTS