

# Elstoft House



## FEATURES:

Safe and secure

Views of Corio Bay

Chapel

Large gardens

Vegetable patch

Theatre room

Activity room

Respite care

Dementia care

As one of the longest-serving care providers in Melbourne, *mecwacare* has a proud history of providing residents with an aged-care experience tailored to their individual requirements.

The *mecwacare* Elstoft House (formerly Vincentian Village) provides:

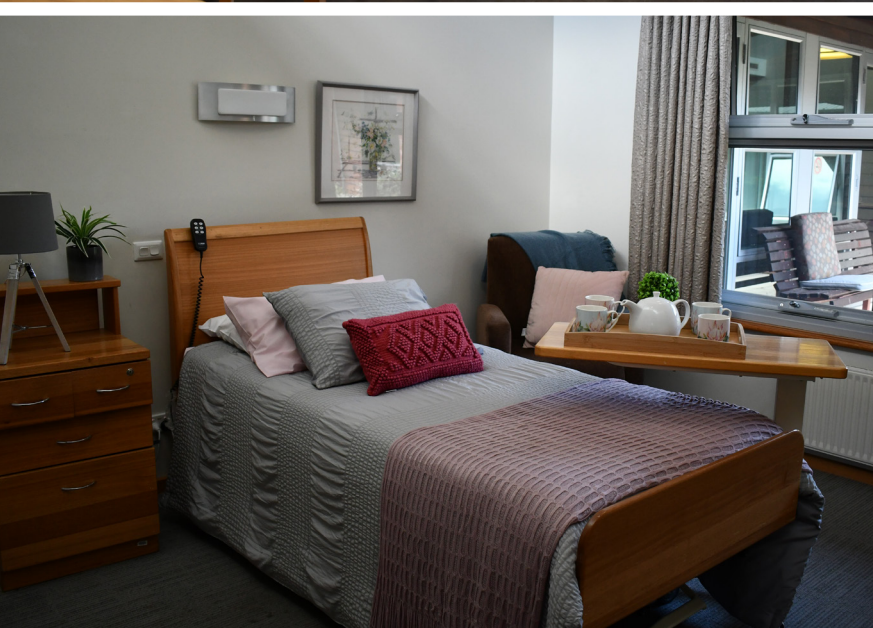
- 24-hour care and support provided by Registered Nurses, personal care and lifestyle staff
- Full accreditation under the Australian Aged Care Quality Agency
- Ageing-in-place accommodation
- Couples accommodation
- Respite care
- Dementia care
- Three separate dining areas / Large lounge areas
- Activity room with tea/coffee making facilities for residents' families
- Garden with two large aquariums and bird aviary



**mecwacare**  
[www.mecwacare.org.au](http://www.mecwacare.org.au)

Further information  
mecwacare Elstoft House  
12-14 Beulah Street, Hamlyn Heights VIC 3215  
E [admissions@mecwacare.org.au](mailto:admissions@mecwacare.org.au)  
P 03 8573 4812





# *A welcoming, caring and safe community*

Located in Hamlyn Heights to the west of Geelong, *mecwacare* Elstoft House has accommodation for 91 residents offering single rooms, the majority with ensuite bathrooms and several offering views of Corio Bay.

*mecwacare* Elstoft House has three separate dining areas and large lounge areas with large screen televisions which provide the residents with an area to socialise. There is a large activity room provided for various activities with a tea and coffee area for residents' families, and there is a chapel on-site available for worshipers of all denominations.

*mecwacare* Elstoft House is surrounded by large gardens with sitting areas and winding pathways. Residents have access to the entire garden and the option to tend to their own garden area or join a communal vegetable patch. There are also two large aquariums and a bird aviary for residents to enjoy.

The activities calendar is planned a month in advance and provides many interesting and varied group activities such as cooking and sewing groups, and the cafe each Friday. Outings are conducted weekly on the facility bus to a variety of clubs and places of interest. Residents also enjoy sing-alongs, dancing and music each week.

## *Caring for the community since 1959*

With over 62 years' experience and homes across metropolitan Melbourne and regional Victoria, *mecwacare* is a leading not-for-profit charitable organisation with a reputation for excellence. Caring is at the heart of everything we do. We are here for you and your loved ones, every step of the way.

Elstoft House welcomes people for respite and permanent care. Please contact our Admissions team on 03 8573 4812 to learn more about this wonderful home and to book a tour of the facility.

**mecwacare**  
www.mecwacare.org.au